






# BERG

 Purde 19-11, 50106  
 Tartu, Tartumaa  
 Estonia

NORTH  HUS

 +372 56 629 768  
 [info@northhus.com](mailto:info@northhus.com)  
 [www.northhus.com](http://www.northhus.com)

**BERG** is inspired by the mountains and designed to be built on hills or places with stunning views. Therefore, the mainly used rooms that are normally on the first floor are raised to the second floor to increase the effect of landscape views. **BERG** will blend in with the surrounding nature perfectly thanks to its grass roof and external design details. The key feature of this house is definitely the large grass balcony where you can step directly from the living room. The balcony runs all around the second floor living room area. It is connected to the roof, so you'll have an access to the grass roof on top of the house after a little 45° climb. In addition to the huge spacious living room, which is surrounded by floor-to-ceiling windows, you'll have a kitchen with plentiful storage that can be turned into a professional wine cellar.

There is also a master bedroom with its own grass covered balcony and a large extra room which can be turned into an office, a guest room, etc. The master bedroom has a shared bathroom with the kitchen.

The first floor houses three bedrooms, a second living room (game room), a bathroom with sauna, rooms for household, and a large garage with carport in front of it, which symbolizes a cave in the mountain. The three bedrooms are meant for children and complemented with a second living room with the purpose of a game/reading room. The game room can be divided into two with couches – one is for gaming and watching movies and the other half for reading.

The backrests of the two couches can be used as a table for board games. The second living room has direct access to the first floor terrace so kids can take their gaming/reading outside. This terrace is sided with wooden posts to avoid direct sunlight and give privacy to the users. The posts are a perfect ground for vines and other types of climbing plants. Windows in the bathroom and sauna are situated to provide a view to the outdoors.

The bathroom window has been set so low that the view can be enjoyed from the bath.

You have access to the terrace from the bathroom. On the terrace there is available space for a hot tub, which is sided with wooden beams for privacy.

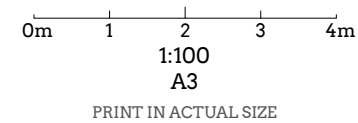
**BERG** is also available with an ordinary balcony and roof!



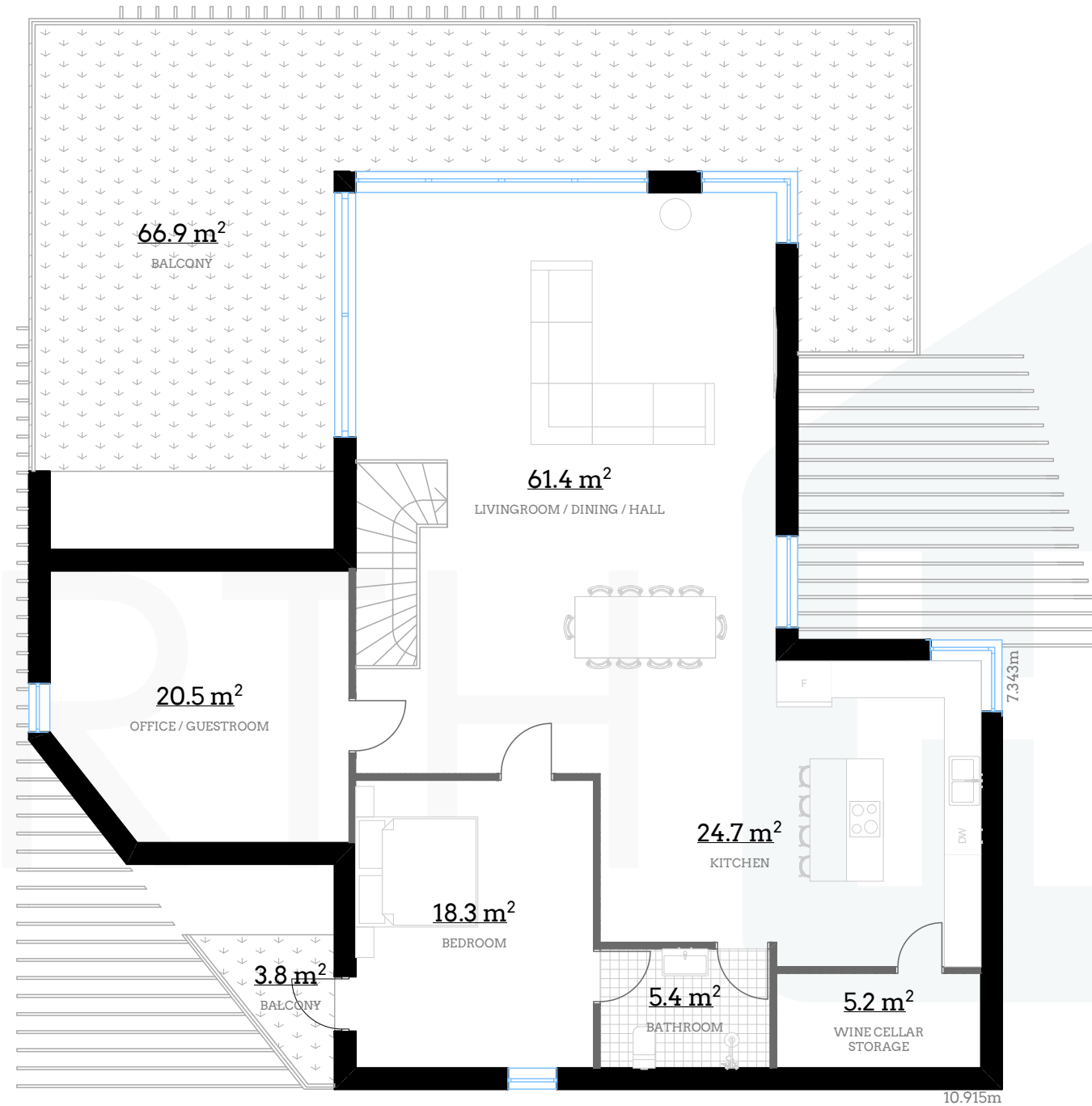
I FLOOR



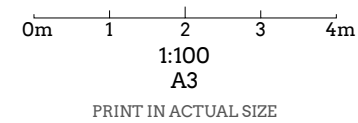
Bedrooms: **5**  
Bathrooms: **3**  
I floor UA: **174.6m<sup>2</sup>**  
I floor BOA: **181.8m<sup>2</sup>**  
II floor UA: **135.5m<sup>2</sup>**  
II floor BOA: **141.8m<sup>2</sup>**  
Total UA: **310.1m<sup>2</sup>**  
Total BOA: **323.6m<sup>2</sup>**  
Ceiling height: **2.7m**  
Ridge height: **6.3m**



II FLOOR

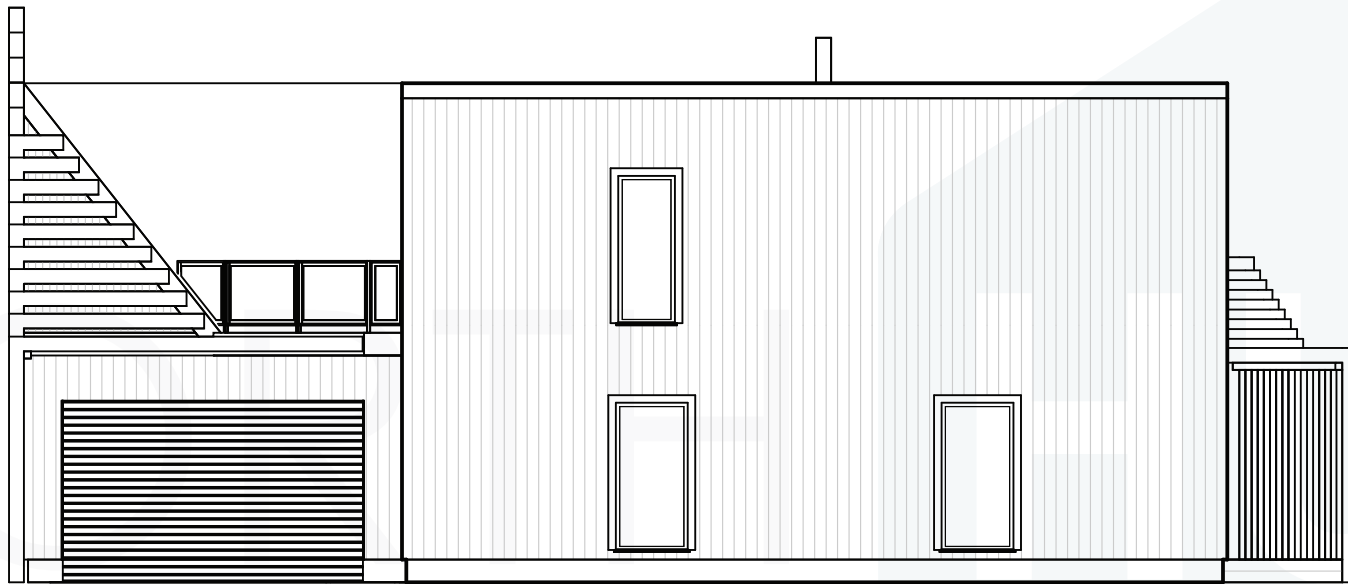


Bedrooms : **5**  
Bathrooms : **3**  
I floor UA : **174.6m<sup>2</sup>**  
I floor BOA : **181.8m<sup>2</sup>**  
II floor UA : **135.5m<sup>2</sup>**  
II floor BOA : **141.8m<sup>2</sup>**  
Total UA : **310.1m<sup>2</sup>**  
Total BOA : **323.6m<sup>2</sup>**  
Ceiling height : **2.7m**  
Ridge height : **6.3m**



A

**BERG**



0m 1 2 3 4m

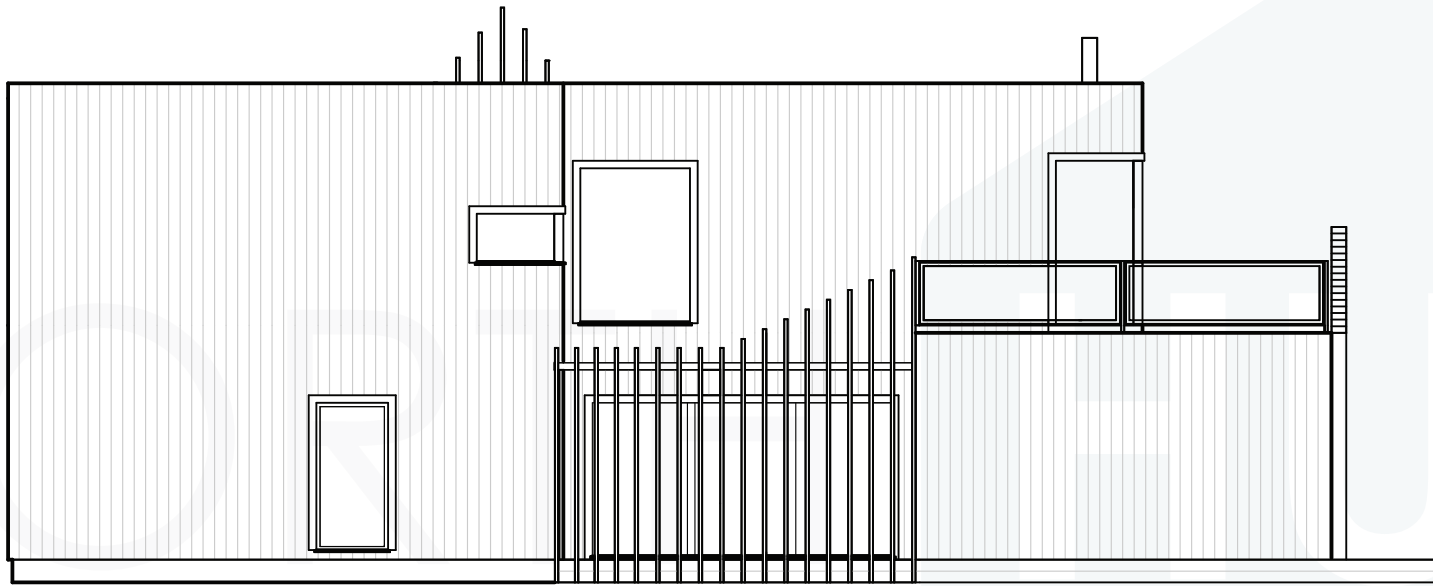
1:100  
A4

PRINT IN ACTUAL SIZE

NORTH  HUS

**B**

**BERG**



0m 1 2 3 4m

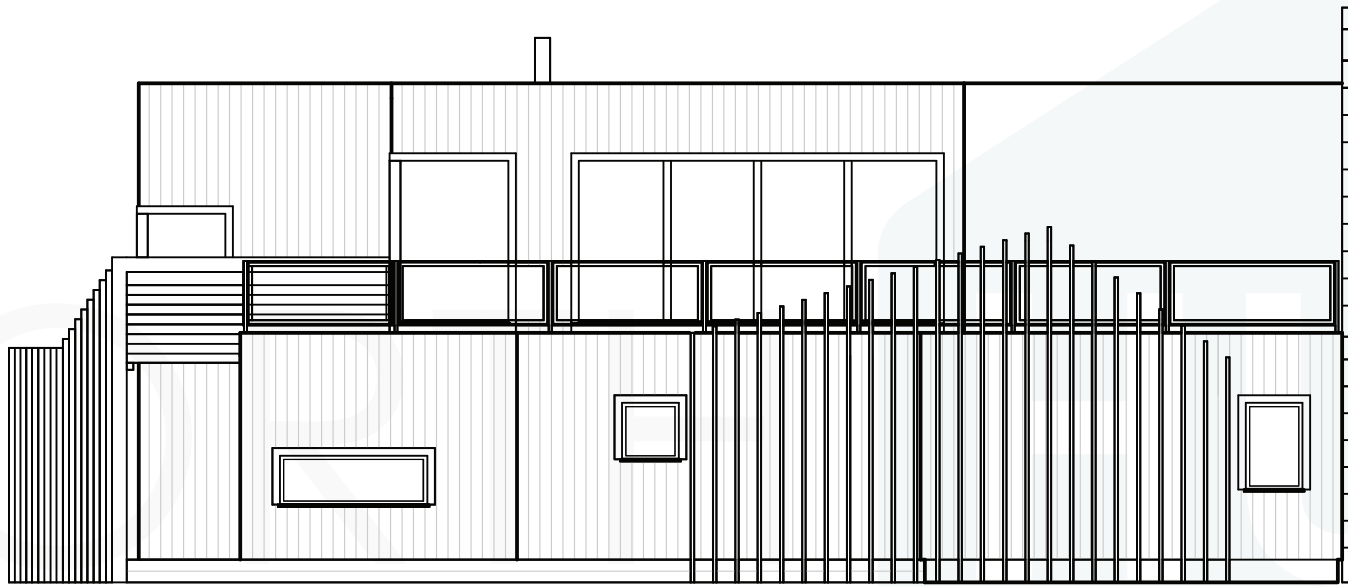
1:100  
A4

PRINT IN ACTUAL SIZE

NORTH  HUS

C

**BERG**



0m 1 2 3 4m

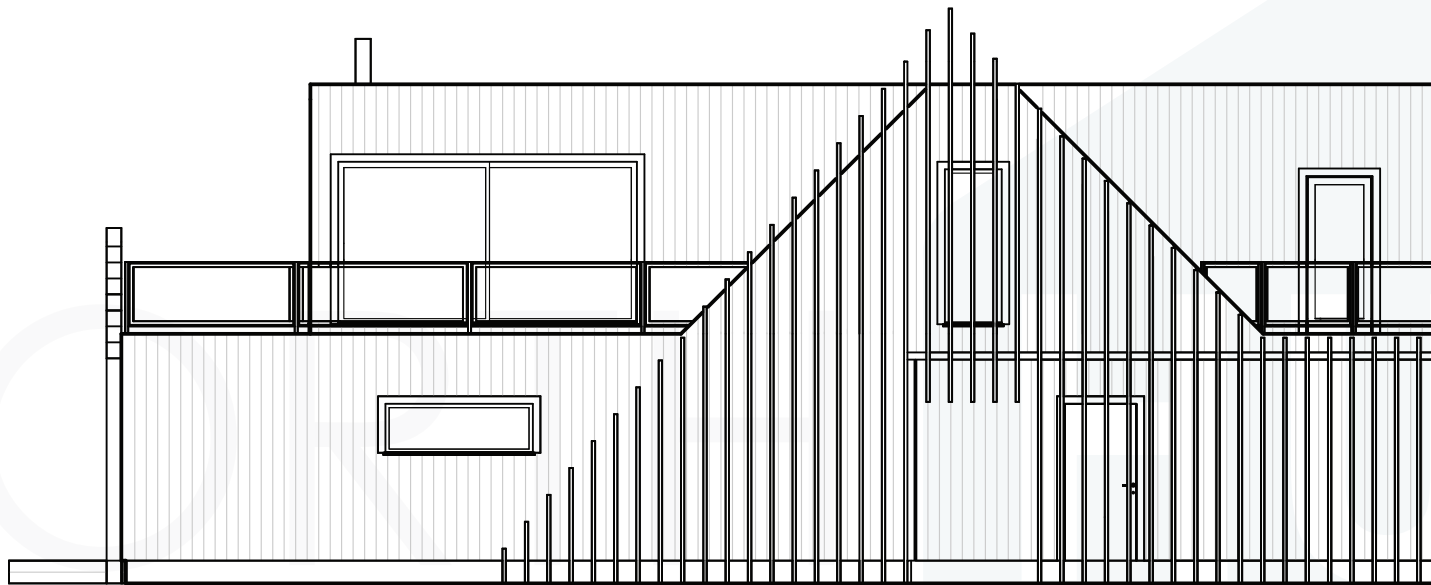
1:100  
A4

PRINT IN ACTUAL SIZE

NORTH  HUS

D

**BERG**



0m 1 2 3 4m

1:100  
A4

PRINT IN ACTUAL SIZE

NORTH  HUS