






# BJÖRK 2

 Purde 19-11, 50106  
 Tartu, Tartumaa  
 Estonia

NORTH  HUS

 +372 56 629 768  
 [info@northhus.com](mailto:info@northhus.com)  
 [www.northhus.com](http://www.northhus.com)

**BJÖRK 2** is an endlessly prolongable semi-detached house. It can be as small as a 1-room apartment, but the best aesthetic look is reached with 3 or more apartments. It has a classy look with modern details which bring that classic semi-detached house look into the 21st century, being suitable for both surroundings – classic and modern. **BJÖRK 2** is oriented for young families. The second floor houses three bedrooms and a bathroom with maintenance.

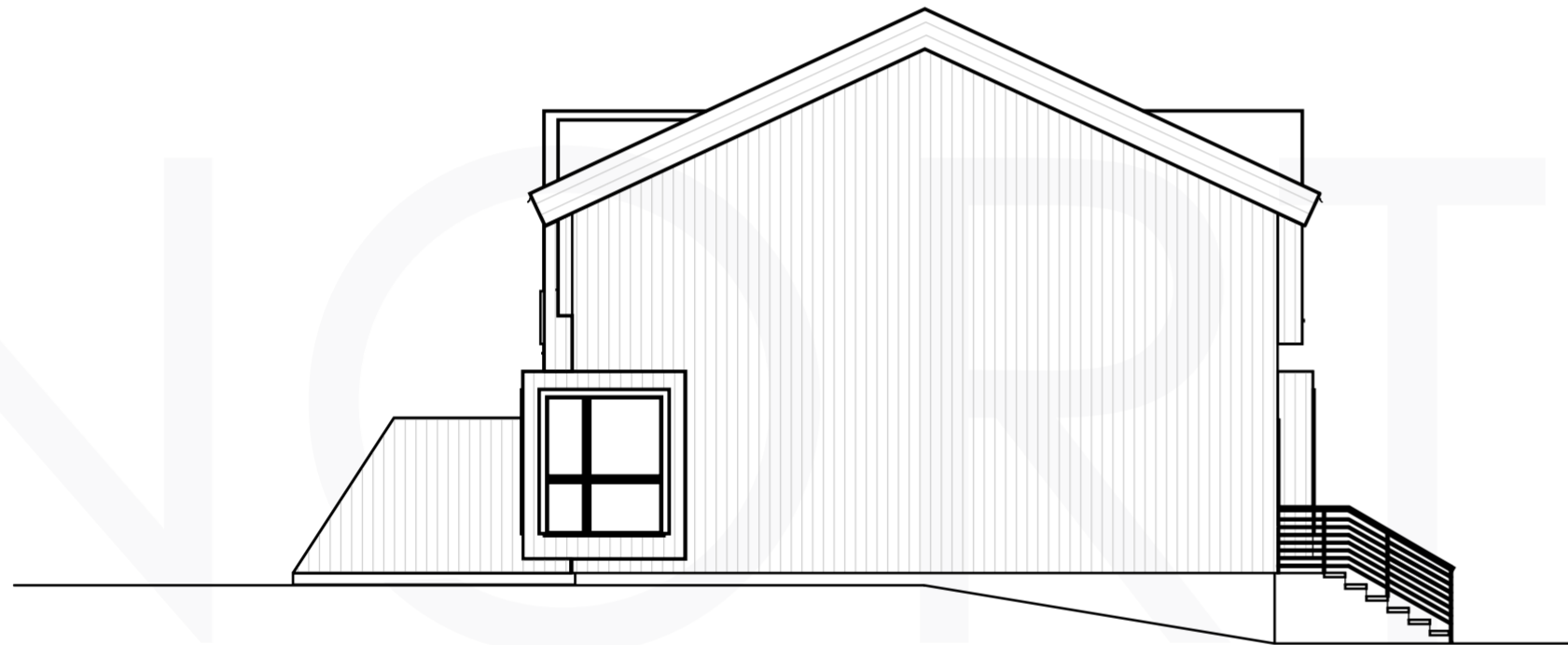
The first floor is designed to sustain daily activities so family members could have their privacy if needed – the hall, kitchen, and living room can be closed off from each other with sliding doors which are held inside the wall when the doors are open. So some people can have a movie night whilst others bake in the kitchen. The living room window has a wide sill for cosy reading or watching TV. The kitchen window sill is also widened for an additional shelving possibility during dinner parties.

All apartments have identical floor plans to provide children from different families a possibility to grow up together and learn from each other, living in similar living conditions yet having different backgrounds.





**B**



**D**

