






# FOSS 1.0

 Purde 19-11, 50106  
 Tartu, Tartumaa  
 Estonia

NORTH  HUS

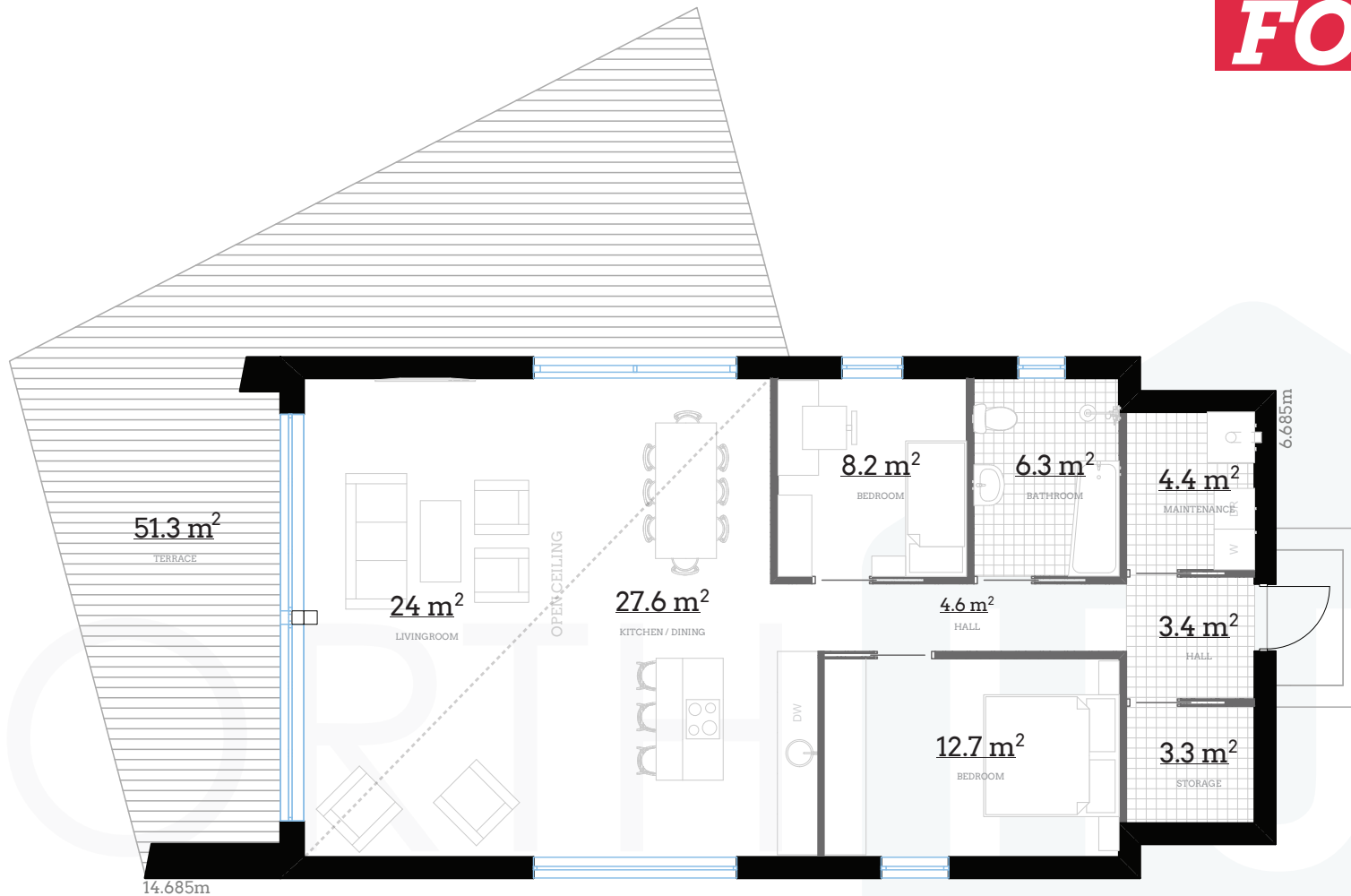
 +372 56 629 768  
 [info@northhus.com](mailto:info@northhus.com)  
 [www.northhus.com](http://www.northhus.com)

**FOSS 1.0** is a single floor modern house that embraces its surroundings and tries to be a seamless border between nature and a warm cosy home. Like a waterfall – although water makes you wet, you won't be soaked when you step behind the stream. To minimize the borders between the inside and the outside, **FOSS 1.0** has vast glass surfaces and a glass roof in the middle of the house. Floor-to-ceiling windows in the dining area and living room are fully openable and provide an opportunity to blur the line between nature and the manmade, especially in the summertime. Both of these windows open to a large terrace which connects the back of the house to its side, so people can sunbathe and have a barbeque simultaneously. The living room area looks like it's cut or not in a finished form, but it symbolizes engraftment to the nature. An open ceiling above the living room and kitchen accentuates the openness.

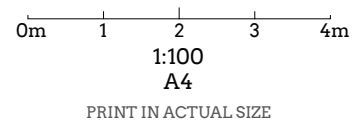
**FOSS 1.0** houses two bedrooms, a spacious bathroom, rooms for storage and maintenance, an open living room and kitchen area.



# FOSS 1.0

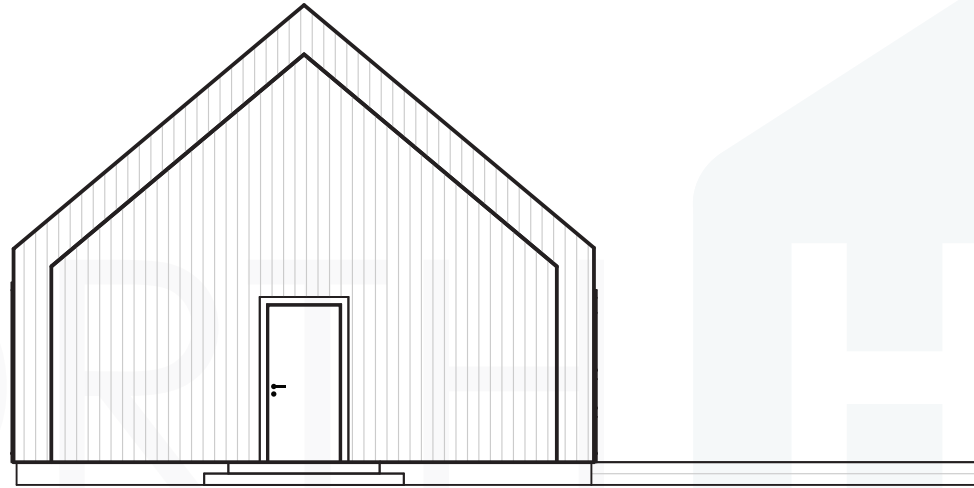


Bedrooms: **2**  
Bathrooms: **1**  
I floor UA: **94.5m<sup>2</sup>**  
I floor BOA: **97.3m<sup>2</sup>**  
Ceiling height: **2.7m**  
Ridge height: **6.1m**  
Roof angle: **40°**



**A**

***FOSS 1.0***



0m 1 2 3 4m

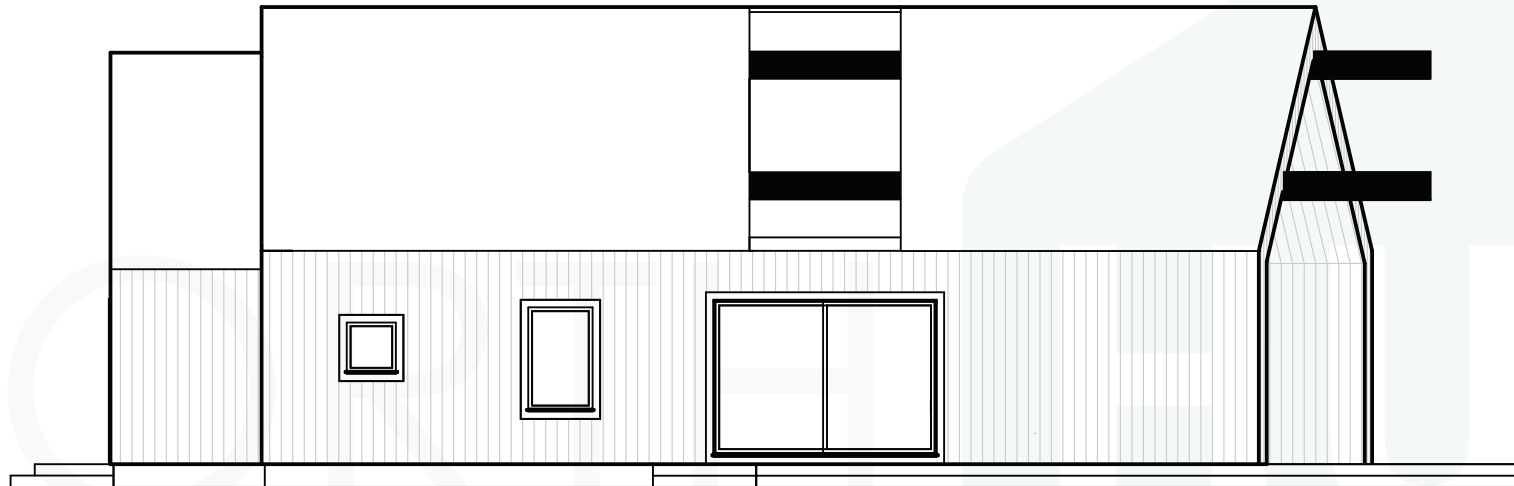
1:100  
A4

PRINT IN ACTUAL SIZE

NORTH  HUS

**B**

**FOSS 1.0**



0m 1 2 3 4m

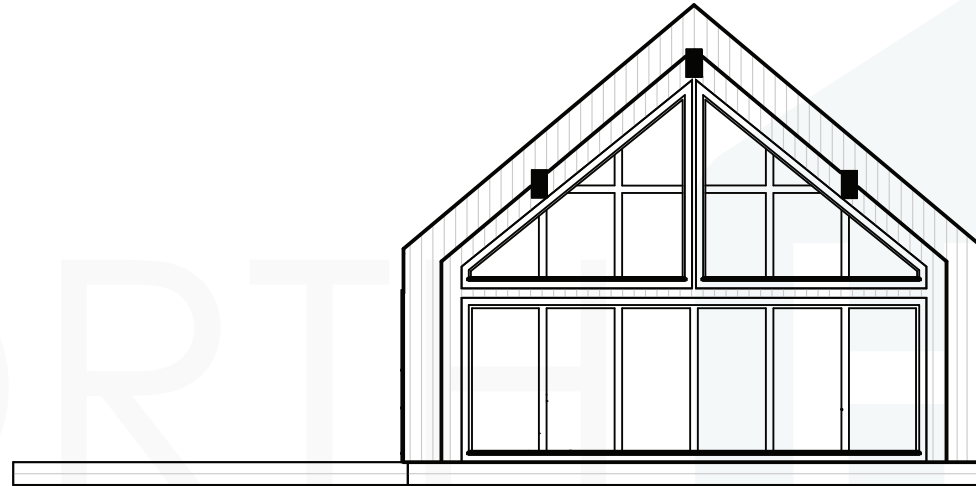
1:100  
A4

PRINT IN ACTUAL SIZE

NORTH  HUS

C

**FOSS 1.0**



0m 1 2 3 4m

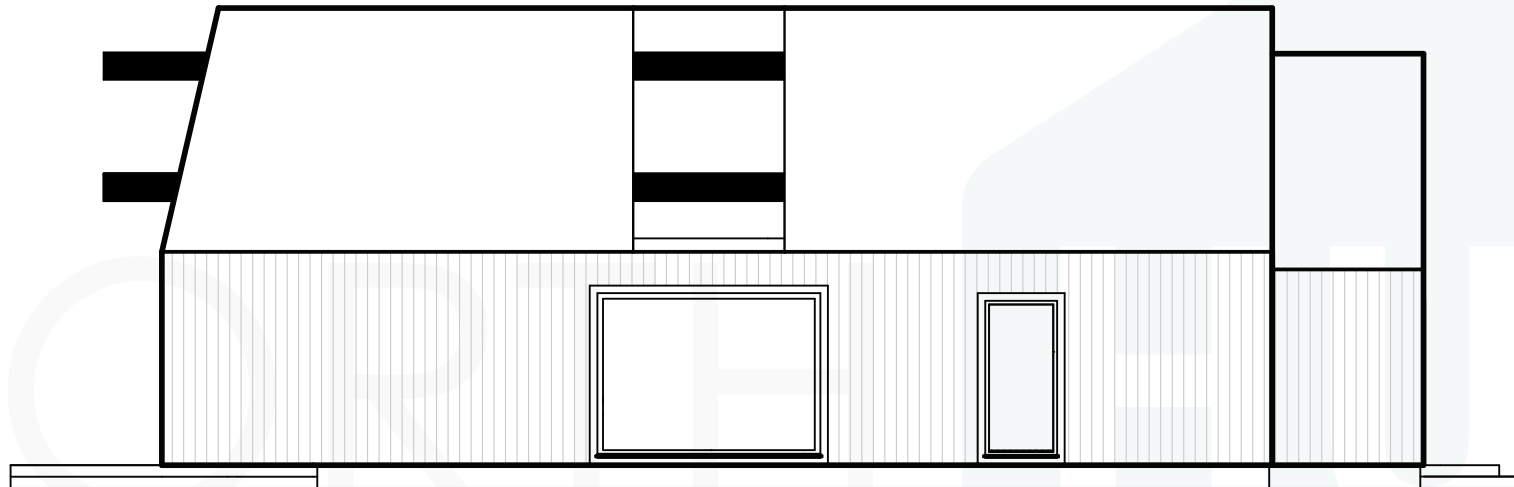
1:100  
A4

PRINT IN ACTUAL SIZE

NORTH  HUS

D

**FOSS 1.0**



0m 1 2 3 4m

1:100  
A4

PRINT IN ACTUAL SIZE

NORTH  HUS