






GUNILLA

 Purde 19-11, 50106
 Tartu, Tartumaa
 Estonia

NORTH  HUS

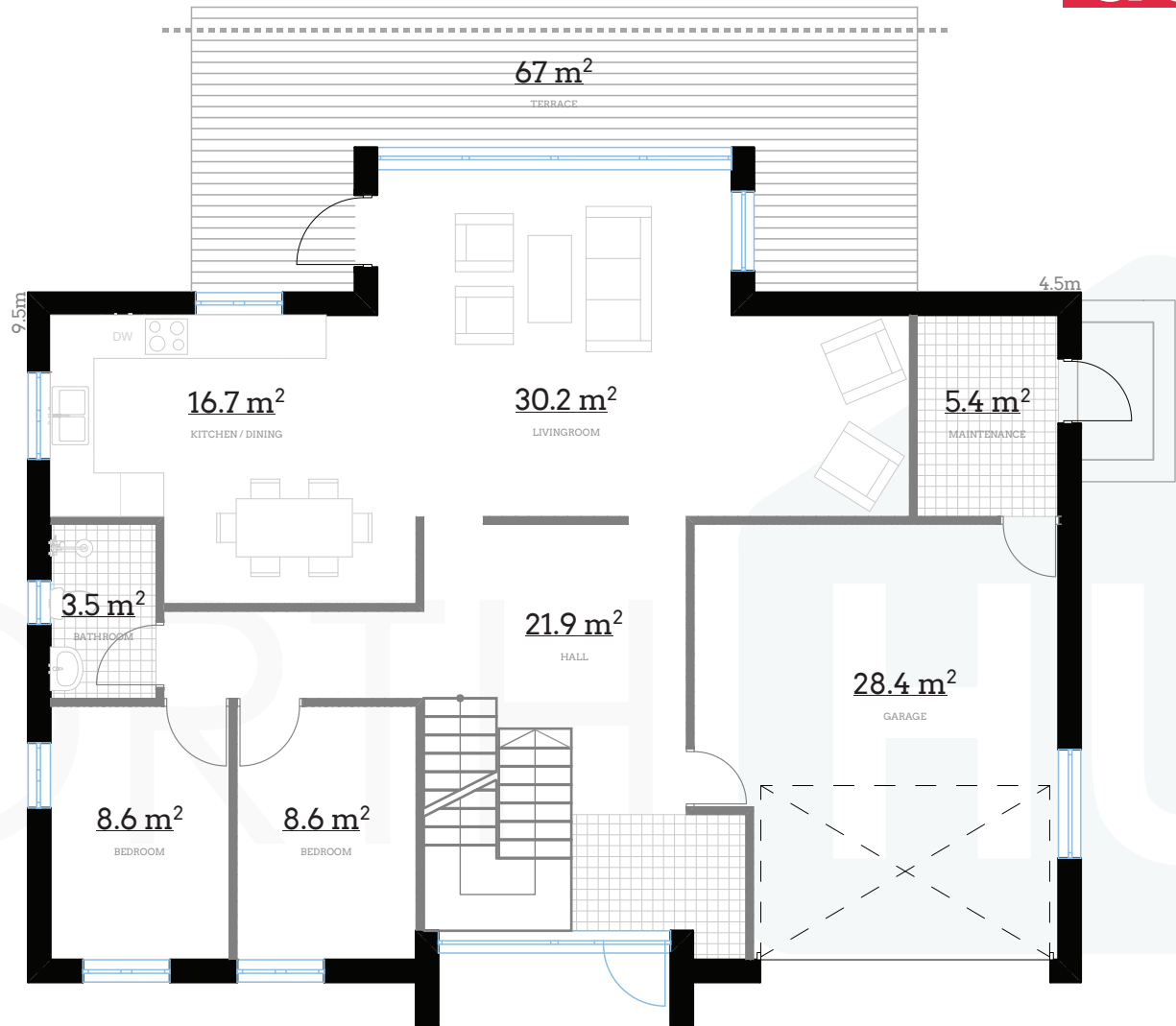
 +372 56 629 768
 info@northhus.com
 www.northhus.com

GUNILLA has large glass walls on both side of the house without many obstacles between them and this lights up the heart of the house so it feels light, welcoming, spacious, and cosy. If situated accordingly, you can see the welcoming sunrise from the hall when starting your day and leaving for work, and take in the romantic sunset hen eating dinner or enjoying a glass of wine on the terrace or balcony after a long day.

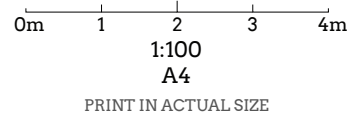
Altogether, **GUNILLA** has 6 bedrooms – two of them on the first floor, which can be used as guestrooms or a home office, a full-size garage with a maintenance room, a bathroom, an open kitchen with dining area, and a living room. The second floor houses 4 bedrooms, a large bathroom, storage, and a large hall with a balcony. The second floor hall can be used as an additional living room.



I FLOOR

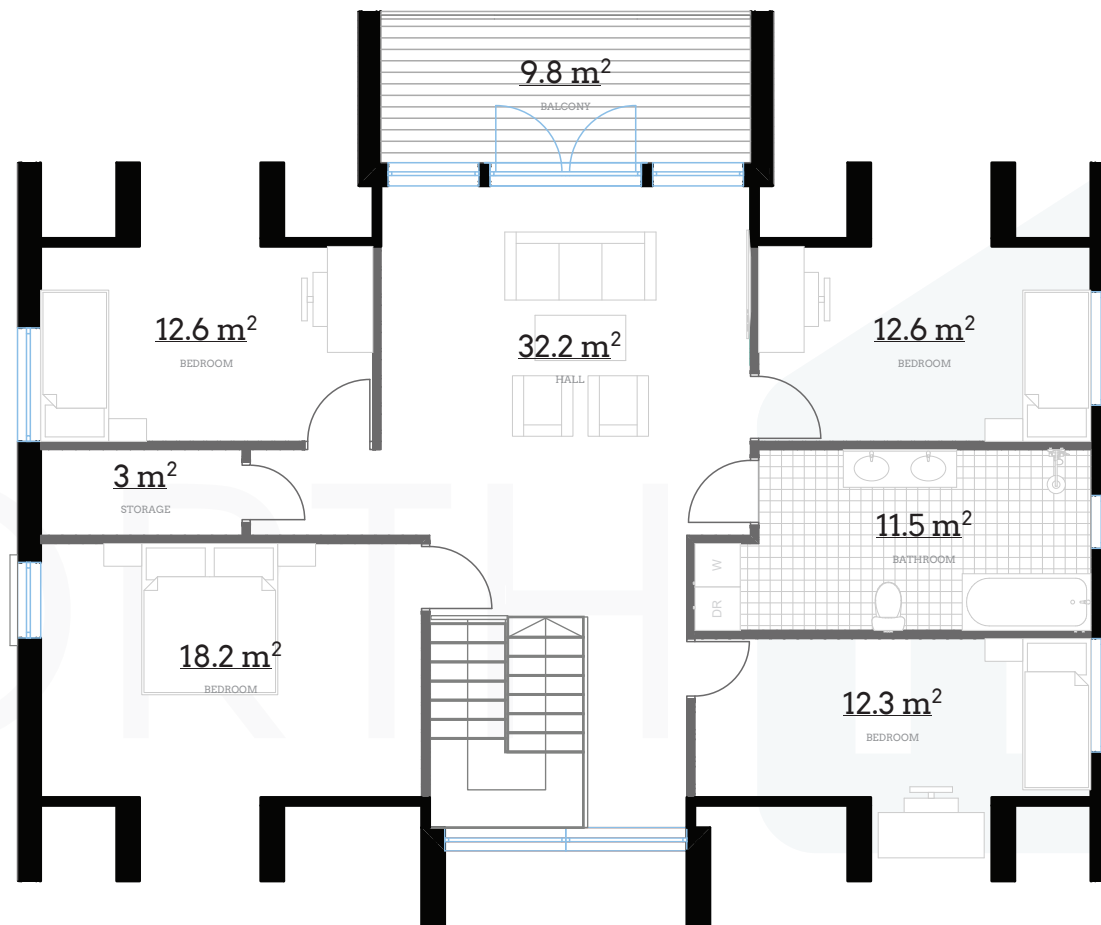


- Bedrooms: **6**
- Bathrooms: **2**
- I floor UA: **123.3m²**
- I floor BOA: **131.7m²**
- II floor UA: **102.4m²**
- II floor BOA: **111.6m²**
- Total UA: **225.7m²**
- Total BOA: **243.3m²**
- Ceiling height: **2.7m**
- Ridge height: **7.8m**
- Roof angle: **40°**



II FLOOR

GUNILLA



Bedrooms: **6**
Bathrooms: **2**
I floor UA: **123.3m²**
I floor BOA: **131.7m²**
II floor UA: **102.4m²**
II floor BOA: **111.6m²**
Total UA: **225.7m²**
Total BOA: **243.3m²**
Ceiling height: **2.7m**
Ridge height: **7.8m**
Roof angle: **40°**

0m 1 2 3 4m

1:100
A4

PRINT IN ACTUAL SIZE

NORTH  HUS

A

GUNILLA



0m 1 2 3 4m

1:100
A4

PRINT IN ACTUAL SIZE

NORTH  HUS

B

GUNILLA



0m 1 2 3 4m

1:100
A4

PRINT IN ACTUAL SIZE

NORTH  HUS

C

GUNILLA



0m 1 2 3 4m

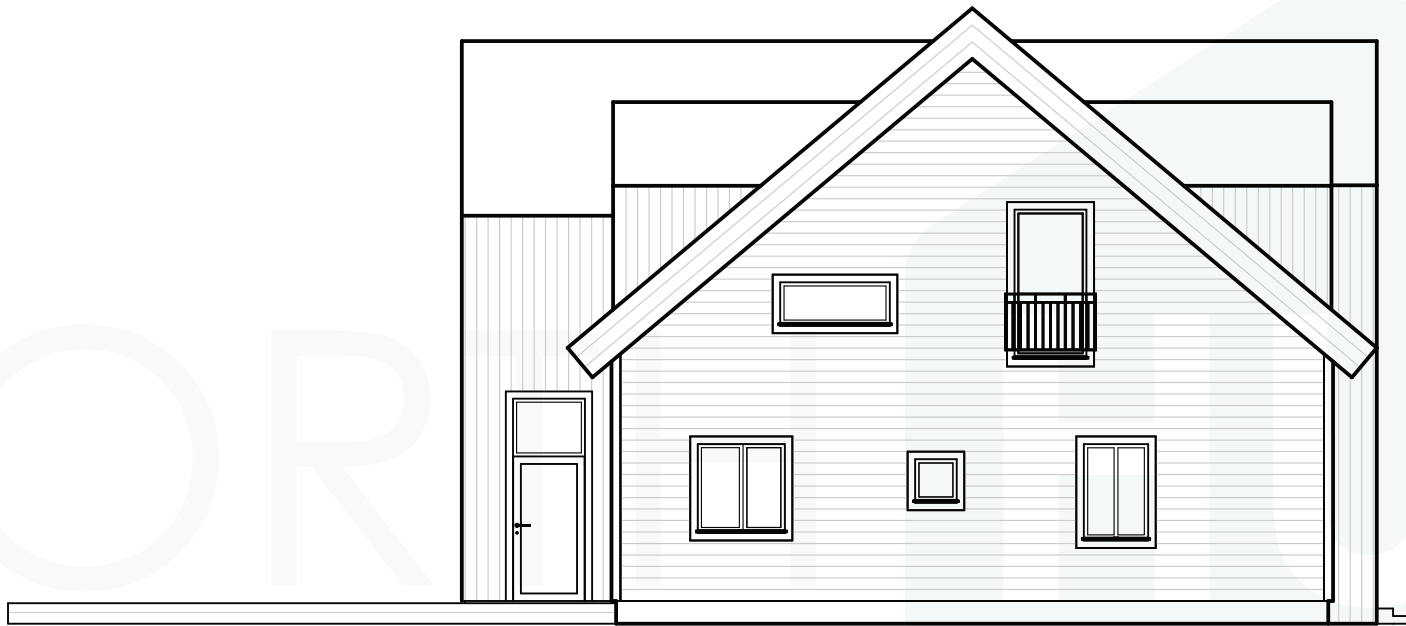
1:100
A4

PRINT IN ACTUAL SIZE

NORTH  HUS

D

GUNILLA



0m 1 2 3 4m

1:100
A4

PRINT IN ACTUAL SIZE

NORTH 