






IDA

 Purde 19-11, 50106
 Tartu, Tartumaa
 Estonia

NORTH  HUS

 +372 56 629 768
 info@northhus.com
 www.northhus.com

IDA is a 1.5 floor, simple, and light classic house on a square shaped base that packs a lot onto a small footprint - 6 bedrooms, 2 bathrooms, an open living room and kitchen, lots of storage, and everything else you need for a comfortable life.

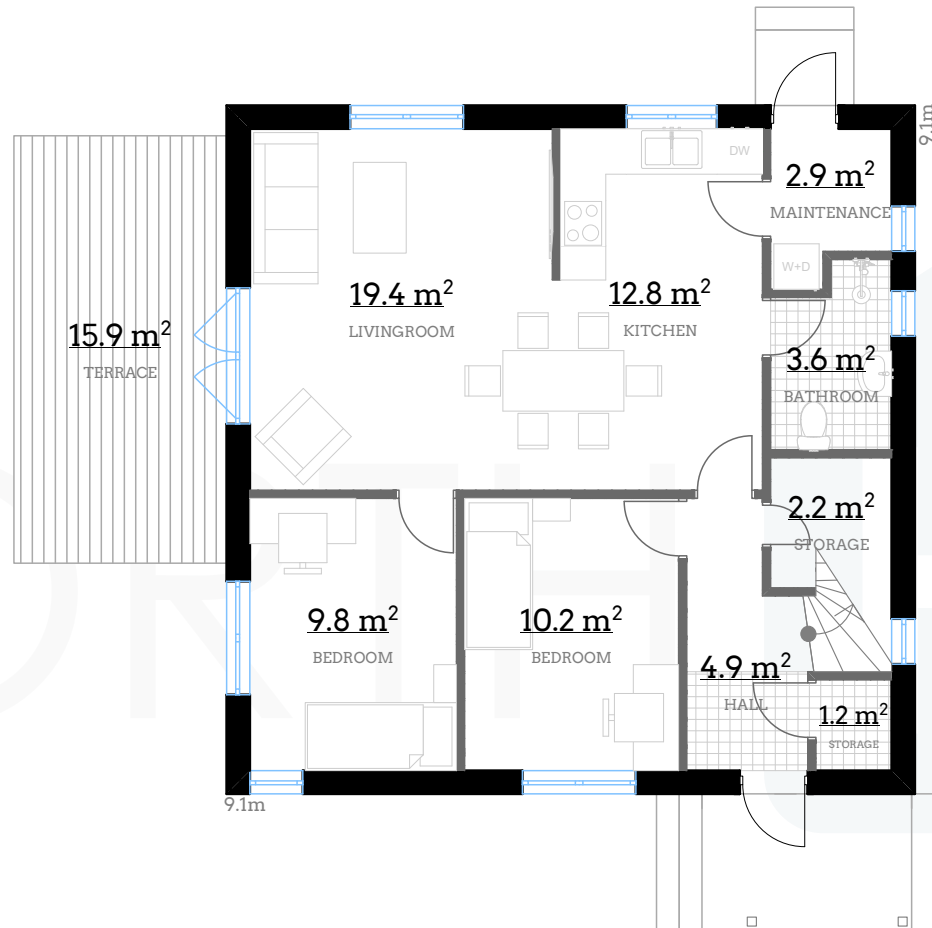
On the first floor there are rooms for everyday life and two bedrooms. The kitchen and living room are partly divided by a wall to better separate the two rooms. The living room has a floor-to-ceiling double window which opens to the terrace, and a regular window in the other wall adds more natural light to the room.

The second floor provides private space for family members. All rooms are similarly shaped. The master bedroom has its own balcony and a separate storage.

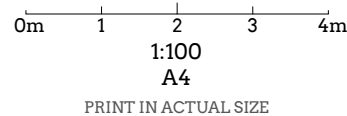
It's a great house for a family with kids.



I FLOOR

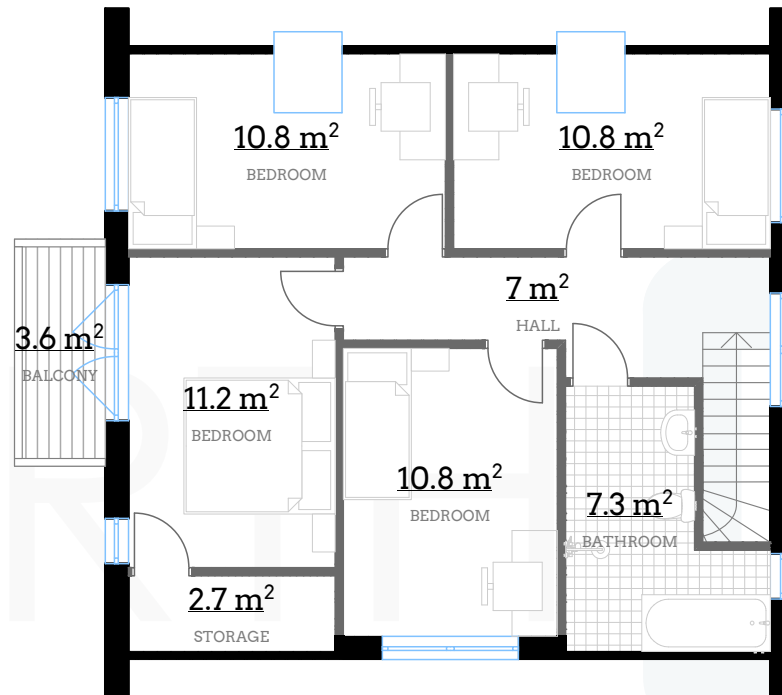


- Bedrooms: **6**
- Bathrooms: **2**
- I floor UA: **67m²**
- I floor BOA: **72m²**
- II floor UA: **60.6m²**
- II floor BOA: **67m²**
- Total UA: **127.6m²**
- Total BOA: **139m²**
- Ceiling height: **2.7 / 2.6m**
- Ridge height: **8.5m**
- Roof angle: **45°**



II FLOOR

IDA



Bedrooms: **6**
Bathrooms: **2**
I floor UA: **67m²**
I floor BOA: **72m²**
II floor UA: **60.6m²**
II floor BOA: **67m²**
Total UA: **127.6m²**
Total BOA: **139m²**
Ceiling height: **2.7 / 2.6m**
Ridge height: **8.5m**
Roof angle: **45°**

0m 1 2 3 4m

1:100
A4

PRINT IN ACTUAL SIZE

NORTH **HUS**

A

IDA



0m 1 2 3 4m

1:100
A4

PRINT IN ACTUAL SIZE

NORTH  HUS

B



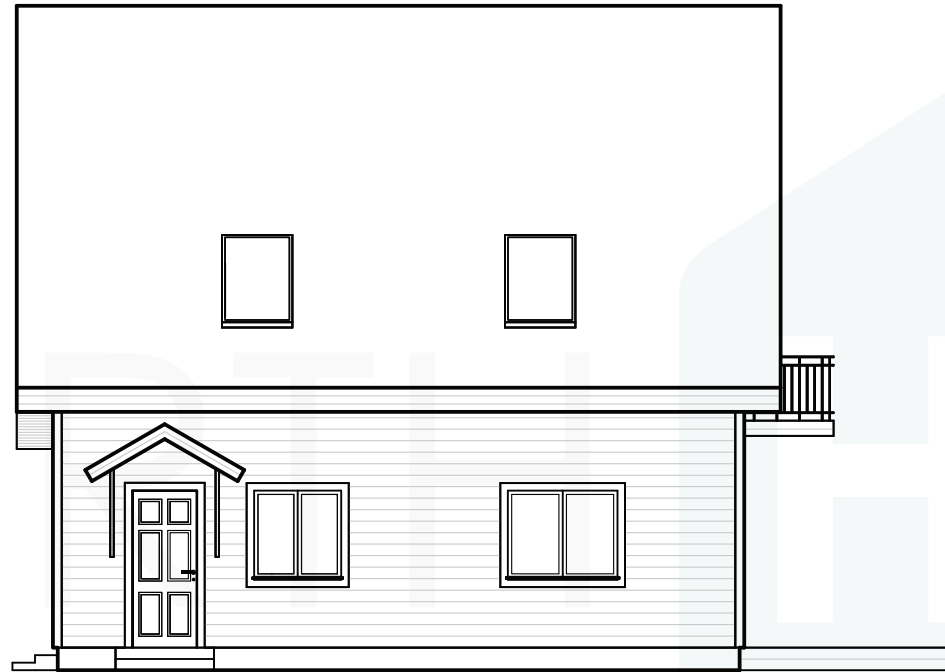
0m 1 2 3 4m

1:100
A4

PRINT IN ACTUAL SIZE

C

IDA



0m 1 2 3 4m

1:100
A4

PRINT IN ACTUAL SIZE

NORTH 

D

IDA



0m 1 2 3 4m

1:100
A4

PRINT IN ACTUAL SIZE

NORTH  HUS